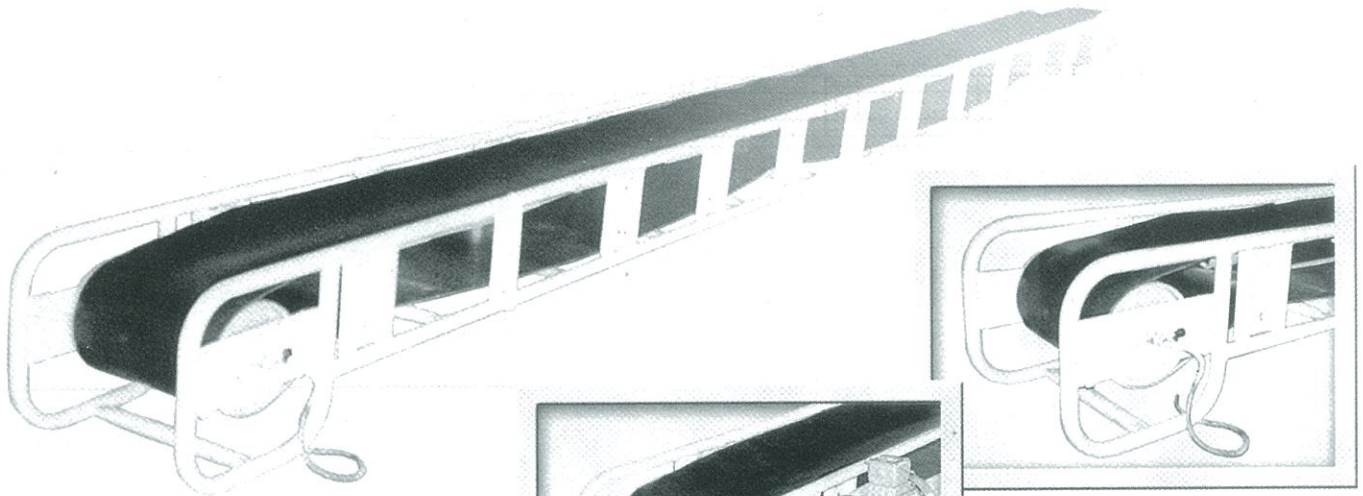


# MODULAR PORTABLE CONVEYOR

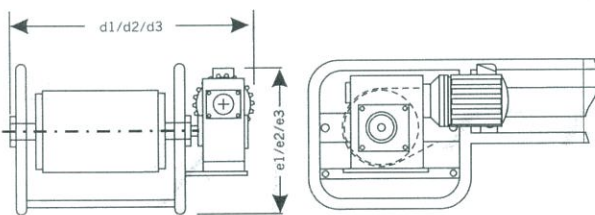
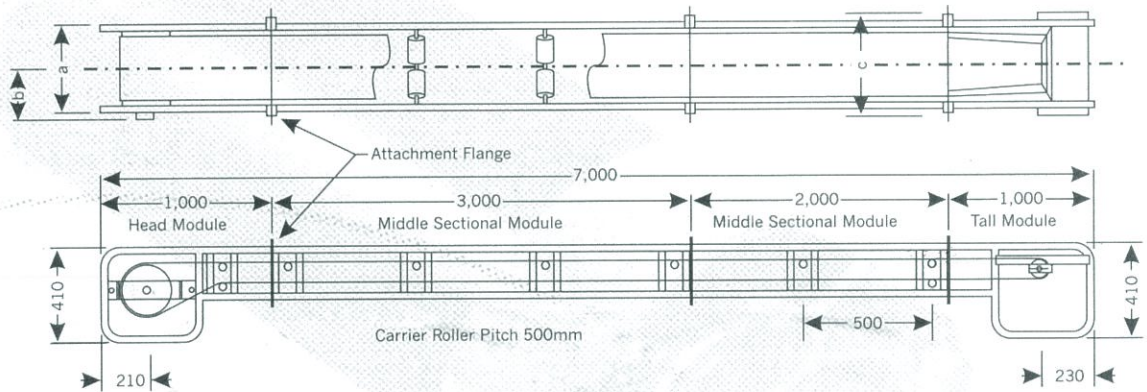


## Model MC Series Modular Portable Belt Conveyor

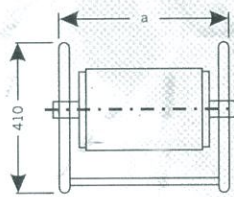
MC series Modular Portable Belt Conveyor is a completely new modular conveyor system which has been designed & developed to meet the increasing demands for greater flexibility, mobility and efficiency in products conveying. These conveyors are designed to provide high power with tough construction. An economic solution to batch conveying.

### Description of the conveyor

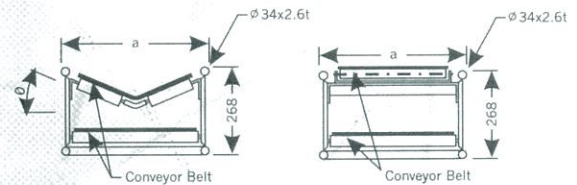
This conveyor is modular design can be able to assembly, adjust easily and quickly. The ranges of sizes start from belt width 350mm to 600mm and any desired length from 3m to 10m and above. The head and tail module is 1000mm in effective length. Conveyor length varies in steps of 1m, 2m and 3m middle sectional module by replacing truss between head and tail module. The flanges on truss can be easily assembly and dismantle using hand tools. Side of the conveyor is clean design with a concave indent but without dirt collecting slots. This conveyor is equipped type of drives, there are Motorized Pulley drive, Geared Motor drive. Air motor, hydraulic and engine drive upon request.



Gear Motor Drive



Motorized Pulley Drive



### GENERAL SPECIFICATION

Model	Max. Capacity (t/h $\geq 1.6$ )	Drive kw	Belt/S m/min	Belt W	$\phi$	a	b	c	d1/d2	d3	e1	e2	e3	@ Wt. Kg/m
MC 35	30	1.0	36	350	23°	458	267	518	695	745	395	425	455	35
MC 40	40	1.0	36	400	23°	528	297	588	755	810	395	425	455	40
MC 45	55	1.5	39	450	19°	588	329	648	820	870	395	425	455	45
MC 50	98	1.5	39	500	19°	638	354	698	870	920	395	425	455	50
MC 60	143	1.5/2.2	42	600	13°	738	404	798	970	1020	395	425	455	60

NOTE : d1 & e1 = S60 x 0.75 kw Gear Motor  
d2 & e2 = S70 x 1.5 kw Gear Motor  
d3 & e3 = S80 x 1.5 / 2.2 kw Gear Motor

### ORDERING CODE

MC - B x L - C (P) - M (G), (A), (E)

Item	Definition
MC	Modular Portable Belt Conveyor
B	Belt Width
L	Conveyor Length
C	2 point troughing carrier roller assembly
(P)	Flat roller assembly
M	Motorized pulley drive
(G)	Geared motor drive
(A)	Air motor drive
(E)	Engine drive