



A N T I S L I P

Ladder Rung Cover Description

Fatalities and severe spinal or head injuries and broken legs are the most common results of a fall from a ladder. Even a brand new ladder with untreated metal is potentially a highly dangerous piece of equipment. Safemate Antislip Ladder Rung Covers eliminate the risk of slips from ladders by increasing the surface area for foot contact and greatly increasing the friction coefficient and visibility.

Safemate Antislip ladder rung covers are manufactured with a square profile to suit any diameter or cross section. Standard lengths vary from 200mm for foot only protection through to 450mm. Ladder rung covers are manufactured in medium industrial grade to ensure antislip protection without being too abrasive so as to damage bare hands. The safety yellow colour offers excellent visual highlighting and they can simply be fastened with adhesive.

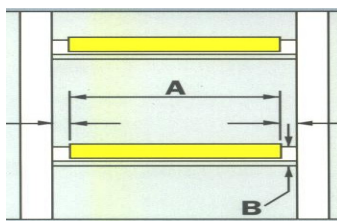


Ordering Recommendations

Dimensions:

Safemate Antislip Ladder Rung Covers are measured in two dimensions; diameter of the existing ladder rung (B) and the width of the ladder rung cover required (A).

- B: *Diameter of the Existing Rung:* Because ladder rungs are manufactured in various diameters, Safemate Antislip Ladder Rung Covers increase in size from 20mm to 35mm. It is important to measure the diameter correctly to ensure a Ladder Rung Cover of tight fit is supplied.
- A: *Width Required:* Most ladders are 350mm - 400mm wide, however they may go up to 500mm. Standard Ladder Rung Cover widths are from 200mm to 450mm in 50mm increments, 300mm Ladder Rung Covers are the most common size, however, if foot protection only is required, 200mm Ladder Rung Covers can be installed in the centre of the rungs so that personnel's hands can still grip the bare rung on either side of the Ladder Rung Cover.



Standard Dimensions:

A: 200mm (7.9"), 300mm (11.8"), 450mm (17.7")

B: 20mm (0.8"), 25mm (1.0"), 30mm (1.2"), 35mm (1.4")

Grade:

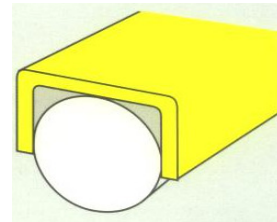
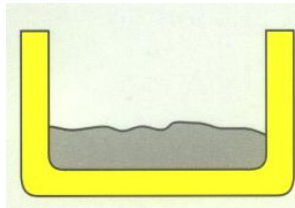
Ladder Rung Covers are only manufactured in medium grade. This grade offers excellent antislip properties without being too severe to damage personnel's hands.

Safemate Anti-Slip Pty Ltd

☎ +61 3 9798 7450 ✉ sales@safemate.com

www.safemate.com

- Colour:** Safety Yellow is always recommended for Ladder Rung Covers to improve visibility. Other colors are available if requested e.g photo luminous.
- Foundation:** 0.9 mm 304 stainless steel is normally used as the foundation for Safemate Antislip Ladder Rung Covers. This product offers excellent resistance to corrosion under most circumstances
- Installation:** The safest and most convenient way to install Ladder Rung Covers is with Sikaflex 11FC sealant adhesive. This adhesive comes in a cartridge which is operated by a heavy duty silicone gun. Simply apply a 6mm diameter bead of adhesive along the inside of each Ladder Rung Cover prior to installing them on properly clean, dry and paint free rungs, snap fit to ladder rung. Let the adhesive cure for approximately 8 hours before use.



- Cleaning:** Because of the extreme hardness and chemical resistance of Safemate Antislip, cleaning can be effected with high pressure steam or water, degreasers, detergents or solvents. Stubborn soilage can be removed with a stiff broom. If solvents have been used, hose off with water at your earliest convenience. Do not use scrapers or wire brushes.
- General:** Never install Ladder Rung Covers on only a portion of a ladder, as change of conditions is more dangerous than overall poor conditions.