

CARRIER AND RETURN ROLLER SET



Dynamic Balances

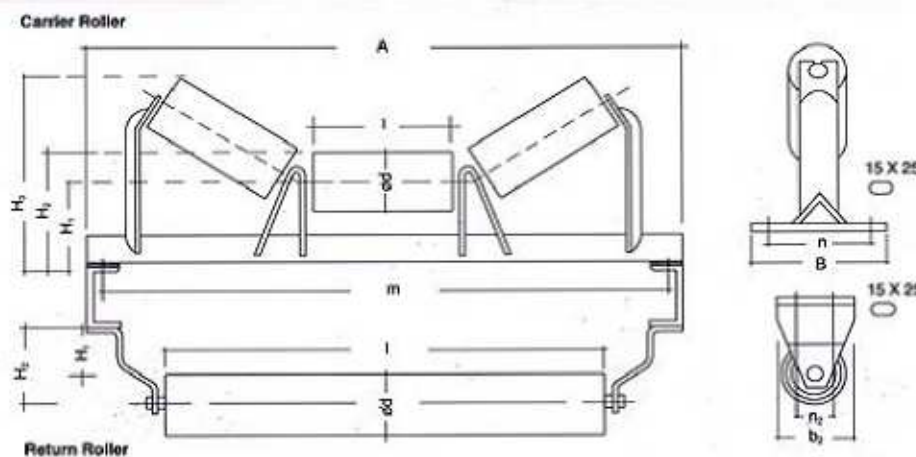
Our automatic mass production assembly techniques guarantee high degree of balance minimum eccentricity impact forces is greatly reduced by this dynamic balance during high-speed operation and this enhance the life span of bearing.

Rubber Seal

The rubber seal, a self-cleaning structure, has less coefficient of friction and also ensures perfect exclusion of foreign materials thus protecting the ball bearings.

Maintenance- Free Operation

The rubber seal type has a built-in non-lubrication system which is maintenance-free and hence reduce running cost.



Unit: mm

CARRIER ROLLER													
UMS - NS	UMS - LS	UMS - RS	Belt width (mm)	Dimensions								Weight (Kg)	
				∅d	l	m	A	H1	H2	H3	n		B
UMS 40-C	UMS-40 C		400	89	145	640	690	125	170	247	140	190	11.40
UMS 45-C	UMS 45-C		450	89	165	690	740	125	170	257	140	190	12.40
UMS 50-C	UMS 50-C		500	59	180	740	790	125	170	264	140	190	13.25
UMS 60-C	UMS 60-C		600	89	210	840	890	140	185	294	150	200	14.00
UMS 75-C	UMS 75-C	UMS 75-C	750	114	265	1040	1090	150	207	344	160	210	22.30
UMS 90-C	UMS 90-C	UMS 90-C	900	114	315	1190	1240	150	207	369	160	210	25.65

	UMS 105-C	UMS 105-C	1050	139	370	1340	1390	180	250	440	180	230	39.35
	UMS 120-C	UMS 120-C	1200	139	420	1490	1540	180	250	465	180	230	43.70
		UMS 140-C	1400	165	500	1730	1795	250	333	589	280	340	89.15
		UMS 160-C	1600	165	580	1930	1995	250	333	629	280	340	109.00
		UMS 180-C	1800	165	650	2220	2285	280	363	693	330	390	147.80
		UMS 200-C	2000	165	730	2420	2485	280	363	734	330	390	163.10

RETURN ROLLER										
UMS - NS	UMS - LS	UMS - RS	Belt width (mm)	Dimensions						Weight (Kg)
				ød	l	H1	H2	n2	b2	
UMS 40-R	UMS 40-R		400	59	460	65	110	60	110	6.15
UMS 45-R	UMS 45-R		450	89	510	65	110	60	110	6.40
UMS 50-R	UMS 50-R		500	89	560	65	110	60	110	7.10
UMS 60-R	UMS 60-R		600	89	660	65	110	60	110	7.90
UMS 75-R	UMS 75-R	UMS 75-R	750	114	850	53	110	60	110	12.20
UMS 90-R	UMS 90-R	UMS 90-R	900	114	1000	53	110	60	110	14.20
	UMS 105-R	UMS 105-R	1050	139	1150	60	130	100	150	22.70
	UMS 120-R	UMS 120-R	1200	139	1300	60	130	100	150	26.10
		UMS 140-R	1400	165	1530	78	160	120	180	38.40
		UMS 160-R	1600	165	1730	78	160	120	180	42.50
		UMS 180-R	1800	165	2000	78	160	120	180	51.65
		UMS 200-R	2000	165	2200	78	160	120	180	57.55

- NOTE: 1) The above roller dimensions are based on JIS-B8803 to insure interchangeability.
- 2) The weight of rotating part is for 3 rolls in carrier roller and for one roll in return roller.
- 3) Rollers which rough angles other than 20° and 30° and titled rollers are available in order.
- 4) We reserve the right to alter the design, specifications or to discontinue the production of any item listed in this catalogue.