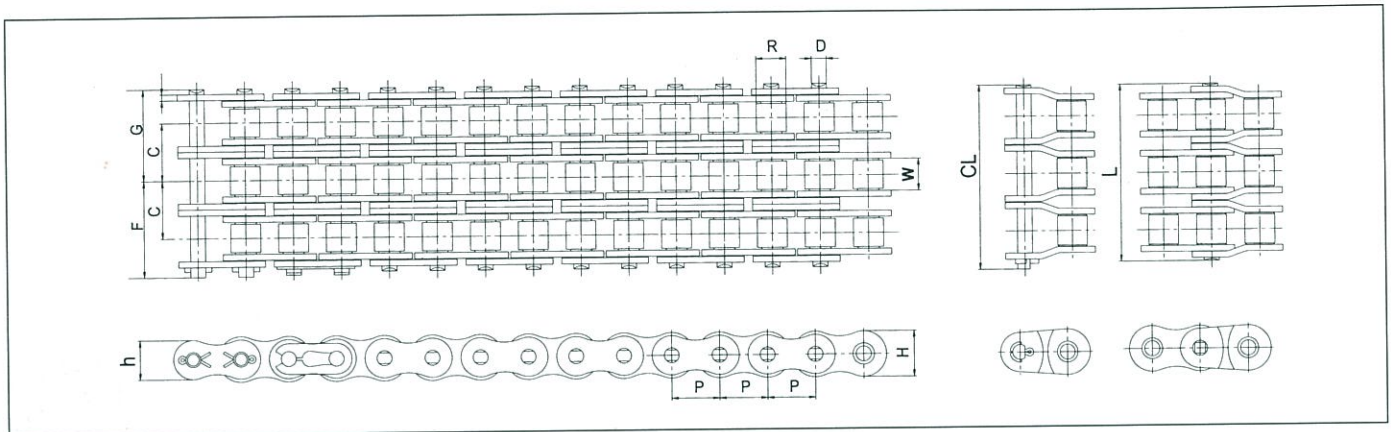
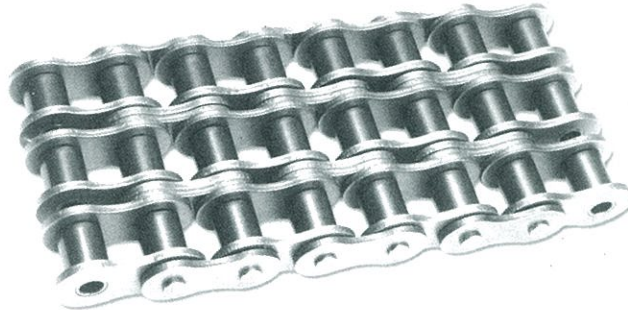


ANSI (Triplex) Standard Roller Chain - Triple Strand

Triple strand roller chain



unit : mm

Fujimoto Chain No.	Pitch	Inner Width	Roller Dia	Plate			Pin				Transverse Pitch	Average Tensile Strength (kgf)	Max Allowable Load (kgf)	Approx Mass (kg/m)
	P	W	R	H	h	T	D	F	G	CL	C			
FC35-3	9.525	4.68	*5.08	9.0	7.8	1.25	3.59	16.0	16.9	34.6	10.1	3,050	550	1.05
FC40-3	12.70	7.85	7.92	12.0	10.4	1.5	3.98	22.65	24.15	47.9	14.4	5,150	930	1.90
FC50-3	15.875	9.40	10.16	15.0	13.0	2.0	5.09	28.4	30.2	59.9	18.1	8,850	1,630	3.09
FC60-3	19.05	12.57	11.91	18.1	15.6	2.4	5.96	35.65	38.15	75.5	22.8	11,950	2,250	4.54
FC80-3	25.40	15.75	15.88	24.1	20.8	3.2	7.94	45.6	48.5	96.9	29.3	20,000	3,750	7.89
FC100-3	31.75	18.90	19.05	30.1	26.0	4.0	9.54	55.65	58.75	117.3	35.8	32,800	5,750	11.77
FC120-3	38.1	25.22	22.23	36.2	31.2	4.8	11.11	70.4	74.4	148.6	45.4	48,450	7,750	17.53
FC140-3	44.45	25.22	25.40	42.2	36.4	5.6	12.71	75.85	80.75	161.3	48.9	60,700	10,250	22.20
FC160-3	50.80	31.55	28.58	48.2	41.6	6.4	14.29	90.45	95.45	190.7	58.5	82,650	13,500	30.02
FC180-3	57.15	35.48	35.71	54.2	46.8	7.1	17.46	101.7	108.5	216.9	65.8	96,900	15,500	38.22
FC200-3	63.50	37.85	39.68	60.3	52.0	8.0	19.85	110.75	116.45	233.0	71.6	136,800	18,250	49.02
FC240-3	76.20	47.35	47.63	72.4	62.4	9.5	23.81	135.85	143.15	286.3	87.8	176,700	25,250	71.6