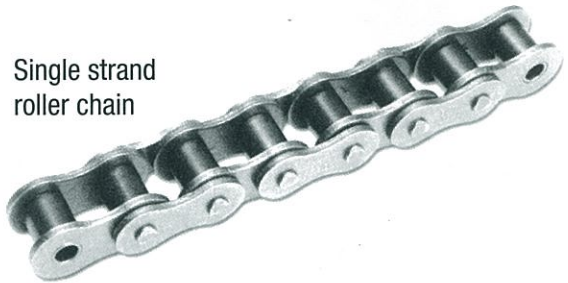
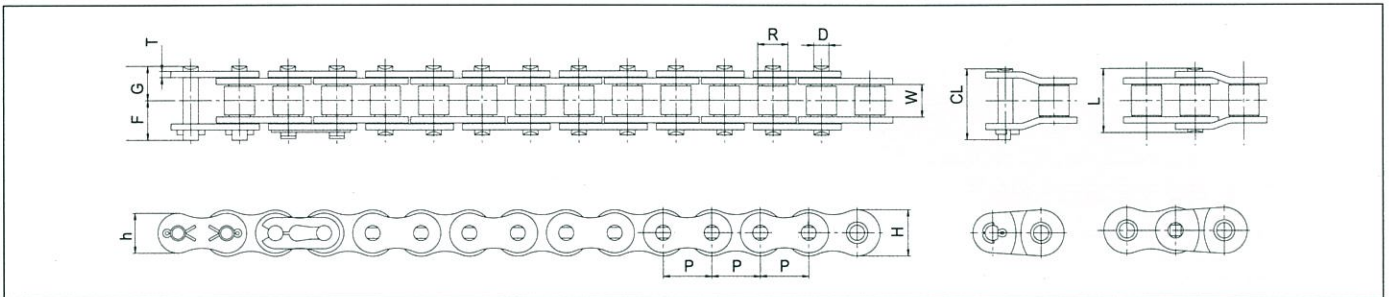


ANSI (Simplex) Standard Roller Chain - Single Strand



Single strand roller chain

Standard power transmission roller chains comply to
 Korean Standard KS B 1407
 American Standard ANSI B 29.1
 Japanese Standard JIS B 1801
 International Standard ISO R606 (Type-A).



unit : mm

Fujimoto Chain No.	Pitch	Inner Width	Roller Dia	Plate			Pin				Average Tensile Strength (kgf)	Max Allowable Load (kgf)	Approx Mass (kg/m)
	P	W	R	H	h	T	D	F	G	CL			
FC25-1	6.35	3.18	*3.30	6.0	5.2	0.75	2.31	3.8	4.8	13.5	400	65	0.14
FC35-1	9.525	4.78	*5.08	9.0	7.8	1.25	3.59	5.85	6.85	18.0	1,100	220	0.33
FC41-1	12.70	6.38	7.77	9.9	8.5	1.25	3.59	6.75	7.95	22.5	1,250	230	0.41
FC40-1	12.70	7.95	7.94	12.0	10.4	1.5	3.98	8.25	9.95	28.2	1,950	370	0.64
FC50-1	15.875	9.53	10.16	15.0	13.0	2.0	5.09	10.3	12.0	36.6	3,000	650	1.04
FC60-1	19.05	12.70	11.91	18.1	15.6	2.4	5.96	12.85	15.25	44.4	4,100	900	1.53
FC80-1	25.40	15.88	15.88	24.1	20.8	3.2	7.94	16.25	19.25	55.8	7,500	1,500	2.66
FC100-1	31.75	19.05	19.05	30.1	26.0	4.0	9.54	19.75	22.85	60.5	12,100	2,300	3.99
FC120-1	38.1	25.40	22.23	36.2	31.2	4.8	11.11	24.9	28.9	71.0	16,000	3,100	5.93
FC140-1	44.45	25.40	25.40	42.2	36.4	5.6	12.71	26.9	31.7	80.6	21,000	4,100	7.49
FC160-1	50.80	31.75	28.58	48.2	41.6	6.4	14.29	31.85	36.85	87.3	30,000	5,400	10.10
FC180-1	57.15	35.72	35.71	54.2	46.8	7.1	17.46	35.65	42.45	106.7	36,000	6,200	13.45
FC200-1	63.50	38.10	39.68	60.3	52.0	8.0	19.85	39.0	44.8		46,000	7,300	16.49
FC240-1	76.20	47.63	47.63	72.4	62.4	9.5	23.81	47.9	55.5		67,500	10,100	24.5